



Developing the FUTURE - "nordwärts" UPDATE





PROJECTS IMPORTANT FOR SOCIETY AS A WHOLE



PROJECTS OF SOCIAL INTERACTION



PROJECTS FOR QUALITY OF LIFE AND THE ENVIRONMENT



PROJECTS LED BY BUSINESS



INHALT

Seite

| | |
|--|----|
| Building quality of life – Port Quarter Speicherstraße | 4 |
| Urban connection – fresh concepts for Union with SMART RHINO | 6 |
| From A to B – attractive welcome at station's northern exit | 8 |
| Liveability and industrial legacy – new homes in Borsigplatzquartier | 10 |
| Energy efficiency first – EnergiePlusQuarter at Brechtener Heide | 12 |
| Living history – community pulse | 13 |
| IGA 2027: "Emscher nordwärts future garden" – ecological, connected, collaborative | 14 |
| Back to nature – enjoying renaturalised streams | 16 |
| Smart and digital – with strong partners for the city | 18 |
| Identifying future issues – smart Energiecampus | 19 |
| From power station to business & logistics park | 20 |
| Big names in trade and transport | 21 |
| Where Dortmund's north is developing the future | 22 |
| Voices from the scientific community | 24 |
| Where and how "nordwärts" is making an impact | 26 |

"nordwärts"

Dortmund is developing northwards



Dear Reader,

The "nordwärts" participation project has been supporting structural change in the northern parts of the city since May 2015. The city, civil society, businesses, the city authorities and politics have all been working together in innovative and sustainable projects to improve the quality of life in the north, to create jobs and housing and to boost potential for the environment and recreation.

At the halfway stage of the project, the stakeholders would now like to show how the north is developing for the future and the impetus that is being created by the major projects and innovations in the "nordwärts" project zone: e.g. the SMART RHINO future campus right next door to the Union Quarter will see the emergence of an innovative development concept with trendsetting ideas for housing, education and sustainability (see p. 6). In the Borsigplatzquartier, a new community of 800 modern residential units (see p. 10) is being planned and at the former Westfalenhütte steelworks and Knepper power station sites (see p. 20) more jobs will be created at the new logistics centres. The renaturalised watercourses in the north (see p. 16) play an important ecological role and contribute considerably to the recreational value of northern Dortmund.

The opportunities for getting involved in innovative activities offered as part of the "nordwärts" project are also highly sustainable: many projects, such as the major repurposing and conversion of Speicherstraße in the Port Quarter (see p. 4) and the SMART RHINO future campus development (see p. 6), provide Dortmunders with the opportunity to get actively involved in the development process. Prime examples for the dedicated involvement of local citizens include the planning workshop convened to redesign the north side of the main railway station (see p. 8) and the founding of the Dorstfeld Community Centre Cooperative to convert the pithead bathhouse at the former Dorstfeld colliery into a community centre (see p. 13). Within the context of the Smart City Dortmund project (see p. 12), we are also working to ensure that the citizens of Dortmund can actively shape their own city, not only in face to face meetings, but also online.

You can keep up to date on how Dortmund's future is developing, and especially the "nordwärts" project, by going to www.dortmund-nordwaerts.de.

Ullrich Sierau
Lord Mayor of the
City of Dortmund

Michaela Bonan
Head of the "nordwärts"
Coordination Office

Ubbo de Boer
Chairman of the "nordwärts"
Board of Trustees



BUILDING QUALITY OF LIFE - PORT QUARTER SPEICHERSTRASSE

The recent ground-breaking ceremony for the new “Leuchtturm” (Lighthouse) building was the starting point for the first new construction project at the Port Quarter Speicherstraße. By the end of 2021, right next to the Santa-Monika excursion boat jetty, this will provide 3,400 m² of individually configurable office space complete with eateries and cafés. This building will provide users with a great place to work with impressive views over part of the Port basin in what is Europe’s largest canal harbour.

Starting work on the construction of the Leuchtturm would be enough positive news on its own, but this just marks the beginning of a whole series of substantial buildings here. These will include, in the southern part of Speicherstraße, the Lensing Media Port, the Heimathafen Nordstadt, the Hafenforum, the Academy for Theatre and Digitality, and the Projektspeicher.

The northern part of the Speicherstraße is taking local citizens’ ideas into account to create an urban quarter with a high-quality environment for working and recreation. The heart of this area will be formed according to the prize-winning plans

submitted by Cobe, a Danish firm of architects, under the huge nave-like roof of an industrial warehouse. Beneath the steel roof structure, a market atmosphere will be created with space for a whole array of small flexible structures suitable for multiple uses. There are also plans for a promenade along the waterways of the Stadthafen and Schmiedingshafen, providing space for recreation and cultural activities.

“In 2016 the Dortmunder Hafen AG and Gerber architects got the ball rolling for the urban re-development of the Port area. Just four years later, demolition and construction work has already made significant changes”, Uwe Büscher, Chairman of the Dortmunder Hafen AG and Managing Director of the d-Port21 development company, is pleased to announce.

As the Port boss, he is working towards the vision of developing a strong digital focus for this quarter on the edge of the harbour, which will complement and enhance the industrial core of the Port with its 160 companies and 5,000 employees. “Ships and Chips” is his catchy slogan for this!



» THE PORT IS OPENING ITSELF UP TO THE CITY, AND THE CITY TO THE HARBOUR. THAT MEANS BETTER QUALITY OF LIFE AND MORE JOBS IN THE NORTH OF DORTMUND, AND SEES US FILLING THE AIMS OF THE “nordwärts” PROJECT WITH LIFE.

UWE BÜSCHER, CHAIRMAN OF THE DORTMUNDER HAFEN AG





URBAN CONNECTION - FRESH CONCEPTS FOR UNION WITH SMART RHINO



» THE SMART RHINO PROJECT GIVES US THE CHANCE TO MAKE THE LOCATION OF DORTMUND AND THE WHOLE METROPOLE RUHR REGION KNOWN FAR AND WIDE AS A PIONEER FOR SMART CITIES, INNOVATIVE MOBILITY AND PARTICIPATION BETWEEN CITIZENS, SCIENCE AND RESEARCH. THE SMART RHINO VISION SHOWS HOW AMBITIOUS AND FORWARD-LOOKING DORTMUND, WESTPHALIA AND NRW REALLY ARE.

ULLRICH SIERAU, LORD MAYOR OF THE CITY OF DORTMUND

On the former site of the Hoesch Spundwand und Profil GmbH (HSP), the SMART RHINO project sees the birth of a new quarter of the future providing space for contemporary living, learning and working as well as for recreation and healthcare. Close to Dortmund city centre, and right next door to the Union Quarter and the Dorstfeld and Huckarde districts, the 52-hectare site will be developed by the Thelen Group.

Pleasant open spaces, good local links and a wide range of different spaces with a strong energy concept will bring nature, technology and people together. A top-quality digital infrastructure combined with public spaces will help to keep everyone connected. Green spaces and park-like landscapes are planned as common places for people to relax and enjoy together.

Sustainability will become the normal way to live here: new energy and mobility concepts will also be put in place, helping the City of Dortmund achieve its climate protection targets. This will include an innovative mobility concept to reliably avoid any unnecessary production of CO².

Closely interlinking all the different aspects of life fosters active cooperation and synergies between the industrial, business and scientific communities right at the heart of society. Supported by a broad network, SMART RHINO will be an incubator and catalyst for solutions for the new, digital society. An ideal place for innovative and interdisciplinary research, teaching and transfer which, for example, the Dortmund University of Applied Sciences and Arts has already selected as the home for its own new key location. The SMART RHINO project will also be integrated locally and regionally in other major projects such as "Smart City Dortmund" (see p. 18), "Emscher nordwärts", the "IGA Metropole Ruhr 2027!" (see p. 14) and the "Ruhr Konferenz".

» SMART RHINO SEES US DEVELOPING THE ENERGY QUARTER OF THE FUTURE. SUSTAINABILITY AND ENERGY EFFICIENCY ARE IN SHARP FOCUS THROUGHOUT ALL THE STEPS OF DEVELOPMENT WITHIN THIS MAJOR PROJECT. THIS IS THE APPROACH WE WANT TO IMPLEMENT – CONSISTENTLY AND COMPREHENSIVELY.

CHRISTOPH THELEN,
MANAGING PARTNER AT THE THELEN
GROUP



SMART RHINO sees itself as a link and catalyst for continuing to develop the Union Quarter and the Dorstfeld district. Embedded in the decades-long "nordwärts" project, SMART RHINO offers the citizens of Dortmund a chance to get involved in developing and shaping the city of tomorrow. The neighbouring quarters will be involved in planning this right from the development phase onwards and the opportunities for getting hands-on will be developed together with the citizens and local stakeholders as well as with the political, business and scientific communities. This means the project will become a national and international exemplar, as a space promoting the potentials of innovative, smart, connected, sustainable and participatory city-quarter design.

Text: Thelen Group



The area covered by the major urban development project in the area to the north of Dortmund's main railway station amounts to 14.4 hectares stretching all the way from Sunderweg through to the station's northern forecourt. It is bordered by the streets Grüne Straße / Steinstraße and Treibstraße as well as the railway tracks leading in and out of the station. For many years, people had not really been aware of one major part of it as it runs along at the same level as the railway tracks about 9 metres above the actual streets of the Nordstadt district.

It was during a four-day planning workshop held in October 2016 with local citizens from Dortmund's Nordstadt that the public first became aware of this planning area. A large number of suggestions were developed at the workshop, including the basic idea which became the starting point for the concept developed by the raumwerk firm of architects: the idea of the "green corridor". A major urban architecture competition held in 2017 saw the participating architects taking up many of the ideas initiated in the planning workshop. The raumwerk architects from Frankfurt am Main succeeded in filling the space along this "green corridor" with such substantial content that it seemed just right for the space. This earned the firm a first place in the competition and, after reworking their draft design, which also involved intensive dialogue with local citizens, the City of Dortmund Council instructed the planning office to examine the requirements of this draft – and especially the economic aspects – more closely.

The next step of this participation process is now ready to get started: collecting the younger generation's opinions on how they think this "green corridor" should be used. The results will also be integrated into the latest plans.

Text: City of Dortmund Dept. for Urban Planning and Building Regs.



FROM A TO B – QUALITY SPACE AT MAIN STATION'S NORTHERN EXIT



» THE MORE COMPLEX DEVELOPMENT PROJECTS ARE, THE STRICTER PROJECT-PROCEDURES HAVE TO BE MANAGED. BUT THAT DOESN'T MEAN PARTICIPATION SHOULD NOT PLAY A ROLE IN SUCH MAJOR PROJECTS. PARTICIPATION MUST BE WRITTEN BIG IN PROJECTS LIKE THIS TOO. IT IS ABSOLUTELY KEY TO GET IT STARTED EARLY.

LUDGER WILDE, HEAD OF CITY OF DORTMUND DEPT. FOR ENVIRONMENT, PLANNING AND HOUSING





LIVEABILITY AND INDUSTRIAL LEGACY - NEW HOMES IN THE BORSIGPLATZQUARTIER

A visionary new housing development is underway in the Borsig Quarter to be known as the “Borsigplatzquartier”: Extending from Stahlwerkstrasse, a welcoming and vibrant new neighbourhood is set to transform the former Westfalenhütte steelworks site. The new community will provide up to 800 quality homes. This westward expansion of the Borsig Quarter will comprise a mix of modern, attractive dwellings, amenities, quality public spaces and social infrastructure. A range of needs is catered for: subsidized, affordable apartments (25 percent rule) will stand alongside privately financed rentals and freeholds.

Attractive and sustainable projects like car sharing schemes, EV charging points and bike hire docking stations will promote local mobility and reduce the prominence of the car, while a local centre with amenities and shops on the southern edge of the residential zone will complement those already available in the vicinity of Borsigplatz itself. These are to include a new primary school and at least one early years childcare facility. A segment of the carpark in front of the Thyssen-Krupp office block on Eberhardtstrasse will be converted into a neighbourhood park equipped with an assortment of play areas. Two larger, public greenways landscaped with water features, footpaths, playground apparatus and recreational facilities will ensure low-stress connectivity between the city centre and a green ring flanking the northern perimeter of the Westfalenhütte grounds.

» **OUR INVESTMENTS, IN COMBINATION WITH
THOSE OF THE CITY TO CREATE GREEN
SPACES, A SCHOOL AND NURSERIES, WILL
BREATHE NEW LIFE INTO WHAT WAS ONCE AN
INDUSTRIAL SITE.**



GERALD DARKOW OF BPD BOUWFONDS PROPERTY DEVELOPMENT

This new location in the city's north is set to become a place of community spaces, connectivity and rejuvenation, transforming a fenced-off wasteland into an ideal environment for families to live and play.

The regeneration project was made possible with investments of over EUR 210 million from the investor consortium Bpd Bouwfonds property development and ImmoWerk GmbH. The land is provided by ThyssenKrupp, which will also recondition the site at its own cost. STAHM ARCHITEKTEN office is responsible for planning, and the city planning and building authority. The city planning and building authority is currently working through the planning procedure. Experience shows that individual details of the overall plan may be modified in the course of the project. Building construction is expected to begin in 2022/23.

Text: STAHM ARCHITEKTEN



» **WESTFALENHÜTTE AND THE BORSIGPLATZQUARTIER - BOTH PLAY AN IMPORTANT ROLE IN DORTMUND'S HISTORY BUT ALSO IN ITS FUTURE. THE NEW RESIDENTIAL AREA CONNECTS WITH THE REST OF THE DISTRICT AND BRINGS IT NEW APPEAL.**

ALEXA WALDOW-STAHM, STAHM ARCHITEKTEN



EFFICIENCY FIRST AND FOREMOST - ENERGIEPLUSQUARTER AT BRECHTENER HEIDE

The new housing development at Brechtener Heide brings its future residents the benefits of quality living and long-term ecological sustainability. The EnergiePlusSiedlung project is now almost complete, with thirteen detached houses already occupied and two apartment blocks currently under construction. Net energy plus buildings produce more energy than they consume thanks to a combination of technologies including thermal insulation and rooftop photovoltaic modules. Phase 1 has been accredited by the State of North Rhine-Westphalia as a climate protection community, setting a precedent for the rest of the region. Residents like Siham Halim are delighted with their innovative homes: "We wanted something sustainable, and we knew this would be the right step for the future. And of course we liked the location too." It looks like there are plenty more enthusiasts lining up to get involved, with work on the next phase of six energy plus homes about to begin. The new-build housing development Rahmer Wald im Jungferntal also boasts six energy plus homes. The project is backed by the City of Dortmund's campaign, "100 EnergiePlusHäuser für Dortmund".

Text: City of Dortmund Housing Department



LIVING HISTORY - COMMUNITY PULSE

» NOW THAT THE PLANS ARE BECOMING TANGIBLE, WE'RE GETTING MORE AND MORE DORSTFELD LOCALS TO JOIN OUR COOPERATIVE AND SUPPORT THE COMMUNITY CENTRE.

OLAF MEYER, ON THE BOARD OF
THE DORSTFELDER BÜRGERHAUS
GENOSSENSCHAFT COOPERATIVE



The Pulsschlag community centre in Dorstfeld: Work has begun on the old colliery bathhouse building. With the support of an army of volunteers, the cooperative Dorstfelder Bürgerhaus Genossenschaft and local interest group IDV have cleared the grounds entirely of weeds and rubbish. With the main structure now gutted, the next step is to refurbish the roof. By 2021 this derelict landmark in the heart of Dorstfeld will be repurposed as a venue for events and community involvement. Named PULSSCHLAG, it will provide a meeting place for clubs, but also a space that can be booked by groups and individuals for special events. An independently run pub and café at its centre will serve as the key meeting point.

The principal component will be the Heinz-Werner Meyer Youthclub, funded by the Youth Welfare Office, which will benefit considerably from its new-found space. And Dorstfeld will finally have a place for its residents to meet up under one roof. A non-profit scheme, any community-spirited private individuals and groups keen to get involved can become members by buying a stake in the enterprise. Donations are also welcome. The grand opening is planned for August 2021. More details at www.pulsschlag-dorstfeld.com.

Federal and regional state funding will part-finance the restoration of this listed historical building by the City of Dortmund.



Dortmund's contribution to the International Garden Festival (IGA) Metropole Ruhr 2027 is to take the form of a large-scale urban development and infrastructure project on the city's northern edge named the "Emscher nordwärts" Future Garden. The renaturalised Emscher (see p. 16) forms the backbone of a residential, business and recreational zone that promises to be verdant, ecological and innovative, combining tradition with the contemporary, and industrial heritage with sustainable habitats. As a highlight of the "nordwärts" project of a decade, the "Emscher nordwärts" Future Garden will project the powerful appeal of its vibrant open spaces well beyond the boundaries of the project itself for generations to come.

The closing date for submissions to the open space planning competition for "Emscher nordwärts" Future Garden designs was July 2020. The finalists' impressive entries showcase the huge potential of the historical Hansa Coking Plant with its listed buildings and the adjoining exhibition areas "Kokerei Park", Energiecampus, the Mooskamp railway depot and Deuserberg. A bridge straddling the railway lines will link Deuserberg from the east to the central International Garden Festival grounds.

To the south of the roughly 40-hectare tickets-only "Emscher nordwärts" site, the focus moves to urban-rural links and connectivity. The development axis runs alongside the Emscher, across the Hansa bridge, to the newly created SMART RHINO future campus in the Union Quarter (see p. 6).

There is much to be done before the International Garden Festival opens its doors to the public. The drafting of more detailed plans and the implementation of such an extensive infrastructure project will take up a significant timeframe. In the meantime, preparations are underway to involve the local community, whose active participation is strongly encouraged: After all, the International Garden Festival is intended as a communal event. Everyone in Dortmund is invited to roll up their sleeves and join in with their own gardens and neighbourhoods.



» THE "EMSCHER NORDWÄRTS" FUTURE GARDEN IS AN INNOVATIVE AND SUSTAINABLE URBAN DEVELOPMENT SCHEME FOR DORTMUND THAT WILL CONNECT PLACES AND PEOPLE. WE WANT TO SEIZE THIS OPPORTUNITY TO WORK HAND IN HAND WITH MEMBERS OF THE PUBLIC, LOCAL CLUBS AND INITIATIVES TO STRENGTHEN THE SURROUNDING DISTRICTS AS PART OF THE INTERNATIONAL GARDEN FESTIVAL 2027.

SUSANNE LINNEBACH, HEAD OF THE DEPARTMENT FOR URBAN RENEWAL

2027 International
Garden Festival
tickets-only area



INTERNATIONAL GARDEN FESTIVAL METROPOLE RUHR 2027 “EMSCHER NORDWÄRTS” FUTURE GARDEN: ECOLOGICAL, CONNECTED, COLLABORATIVE





BACK TO NATURE – ENJOYING RENATURALISED STREAMS

Over a period of 30 years, the Emscher-genossenschaft water board will have invested more than EUR 5 billion in transforming the Emscher, the central wastewater sewer of the Ruhr Region, back into an overground natural watercourse, entirely free of waste water. The Emscher conversion includes furthermore the construction of more than 400 km of subterranean sewers and the transformation of about 330 km into near-natural bodies of water. In Dortmund landscaping had already been completed along the upper reaches of the Emscher and its tributaries by early 2010. The Emscher once more flows as an ecosystem along its natural riverbed. Created with the primary purpose of flood alleviation, the “Emscher-Auen” stormwater retention basin on the border between Mengede and Castrop-Rauxel has evolved into a popular recreational destination, with the café Hof Emscher-Auen a welcome stop for cyclists and walkers.

Watercourses are returning to their original natural state in Dortmund’s northeast too. Under the auspices of the Lippeverband, an affiliate of the Emscher-genossenschaft, and with investments of about EUR 120 million for regeneration and ecological enhancements, the Kirchderner Graben and its tributaries are undergoing a metamorphosis from culverted wastewater sewers to natural streams. Here, at the drainage network known as Knoten Scharnhorst, work began in summer 2020 on renaturalising roughly 12 km of the Seseke tributary to create a wildlife haven. Official plans for new cycle paths along the banks are in progress and will help to bring people closer to the beauty of their local natural environment.

Text: Emscher-genossenschaft and Lippeverband (EGLV)

» WHEN YOU SEE HOW RIVERS EVOLVE INTO HEALTHY ECOSYSTEMS WHILE ACTUALLY HELPING TO PREVENT STORM WATER FLOODING AT THE SAME TIME, IT'S ABSOLUTELY CLEAR: IT WAS WORTH THE INVESTMENT!

PROF. DR. ULI PAETZEL, CEO OF THE EMSCHERGENOSSENSCHAFT
AND LIPPEVERBAND (EGLV)



SMART AND DIGITAL - WITH STRONG PARTNERS FOR THE CITY

Dortmund is a modern, thriving city offering a high quality of life. Digital transformation opens up new opportunities for further growth. The aim is digital connectivity between businesses, the scientific community and the wider public to create a model "smart city" and real-life laboratory for the city of the future. To this end, the Allianz Smart City provides a platform for the development and testing of innovative solutions.

Dortmund's evolution into a smart city should make a significant contribution towards improving quality of life and the environment and to strengthening Dortmund as an attractive location for business. The intelligent networking of systems and people helps to reduce costs, save resources and coordinate city infrastructure more effectively.

A "smart city" is only possible, however, if everyone pulls together and works towards a common goal. That is what the Allianz Smart City is doing in partnership with the city authorities, municipal enterprises, the scientific community, business, associations and of course members of the public.

Text: ClIO, City of Dortmund



IDENTIFYING FUTURE ISSUES - SMART ENERGIECAMPUS



The concept behind the Energiecampus is to establish a pioneering and leading-edge technology park.

It is to be tightly incorporated as an urban component of the site of the 2027 International Garden Festival and, beyond its functional and high-quality architecture, it will reflect the visionary concepts of the festival (see p. 14). Focussing on issues such as energy, water and climate adaptation, the campus will showcase the next generation of building technologies, both in content and in its own construction.

The Energiecampus will build a symbiotic relationship with the nearby Hansa industrial monument, to the mutual functional benefit of both institutions. With a surface area of roughly 4 hectares, the Energiecampus is an important asset in Dortmund's technology landscape.

Text: Economic Development Agency Dortmund



» DIGITALISATION IS MORE THAN JUST
NEW TECHNOLOGIES. IT'S A SOCIETAL
TRANSFORMATION PROCESS. IT'S
ULTIMATELY A QUESTION OF HOW WE
WANT TO LIVE IN THE FUTURE.

DR. FRITZ RETTBERG, CHIEF INFORMATION/INNOVATION OFFICER
AT THE CITY OF DORTMUND

FROM POWER STATION TO BUSINESS & LOGISTICS PARK

Until February 2019 it was the most prominent landmark in the suburb of Mengede on the far north-western edge of Dortmund: the cooling tower of the coal-fired Knepper power station. Following the demolition of the plant and the subsequent clean-up of the site by the Hagedorn Group and now, with legal approval in place for the new land-use plan, property investors SEGRO will start work in 2022 on the creation of a business and logistics park across a total area of 243,000 m².

With approx. 58,000 m² set aside for business premises and a further 185,000 m² for logistics operators, the park will boost job creation in the northern suburbs of Dortmund.

At the same time, some 41,500 m² of the total area is to be renaturalised and returned to nature as a wildlife conservation area. The 65-hectare business park (the equivalent of roughly 91 football pitches) with excellent north/south and east/west motorway connections (A45 and A2) straddles the border between Castrop-Rauxel and Dortmund.



**THERE'S ENORMOUS POTENTIAL
FOR URBAN DEVELOPMENT IN
THE REPURPOSING OF FORMER
POWER STATION SITES.**

RICK MÄDEL (MRICS), HAGEDORN REVITAL GMBH



MOVING FORWARD – WITH LOGISTICS AND JOBS



BIG NAMES IN TRADE AND TRANSPORT

The Westfalenhütte has evolved into a true job creator for Dortmund's north. It already provides work for more than 6,500 people, with more to come in the years ahead. Thanks to excellent connections to the national road network, not to mention its proximity to Dortmund's Port and nearby Dortmund Airport, the site has established itself as a logistics hub on the periphery of the city. Besides big names in the logistics sector such as AMAZON, DHL and DB Schenker, several other companies have opted to settle here including REWE with its new Freshness Centre, and ID Logistics, a provider that fulfils customer orders for the likes of Ikea.

With ThyssenKrupp's decision to build a second state-of-the-art galvanizing line, the Westfalenhütte is set to become a major centre of expertise for galvanized products, remaining faithful to the location's long tradition of steelmaking.

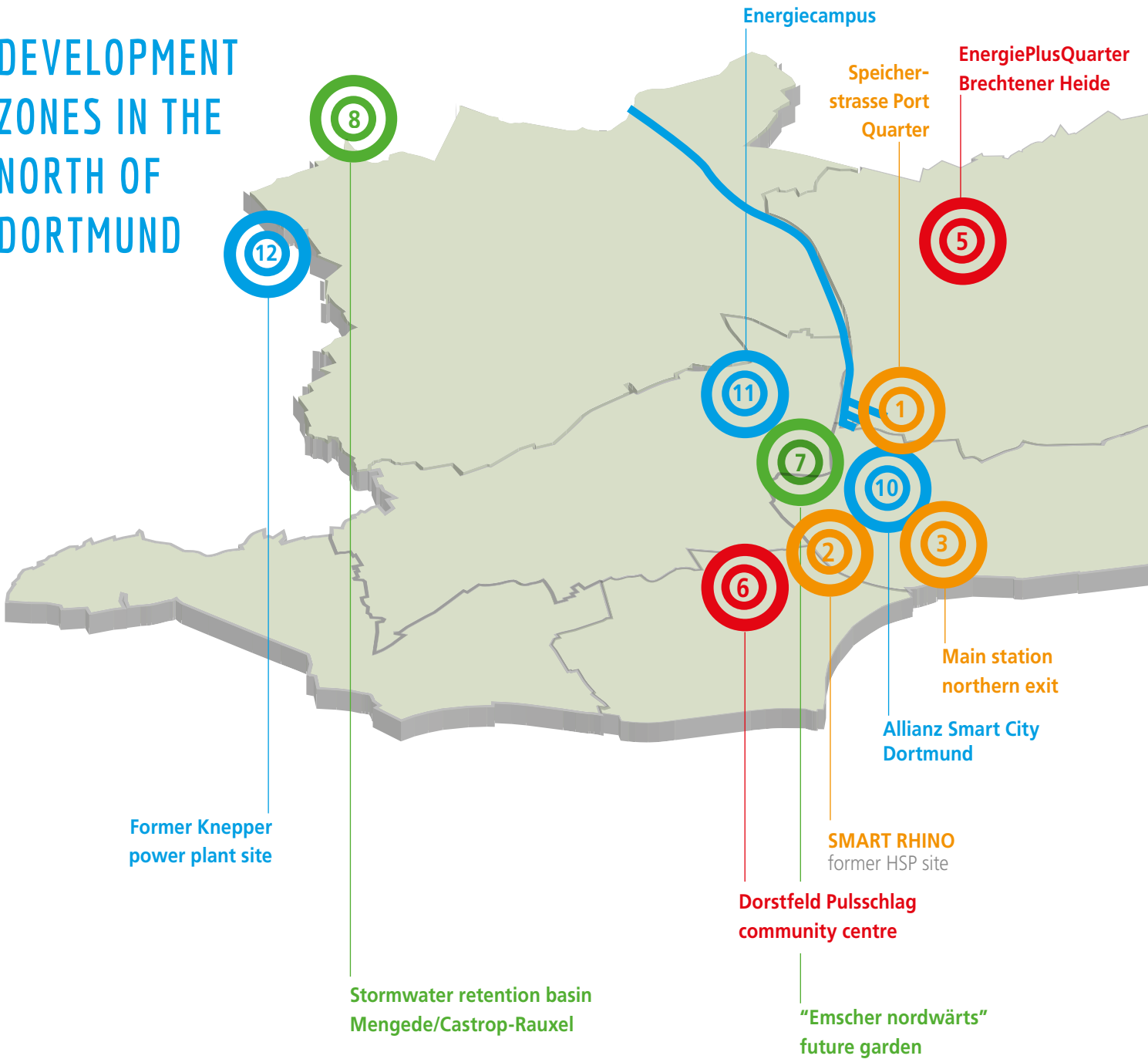
Text: Wirtschaftsförderung Dortmund

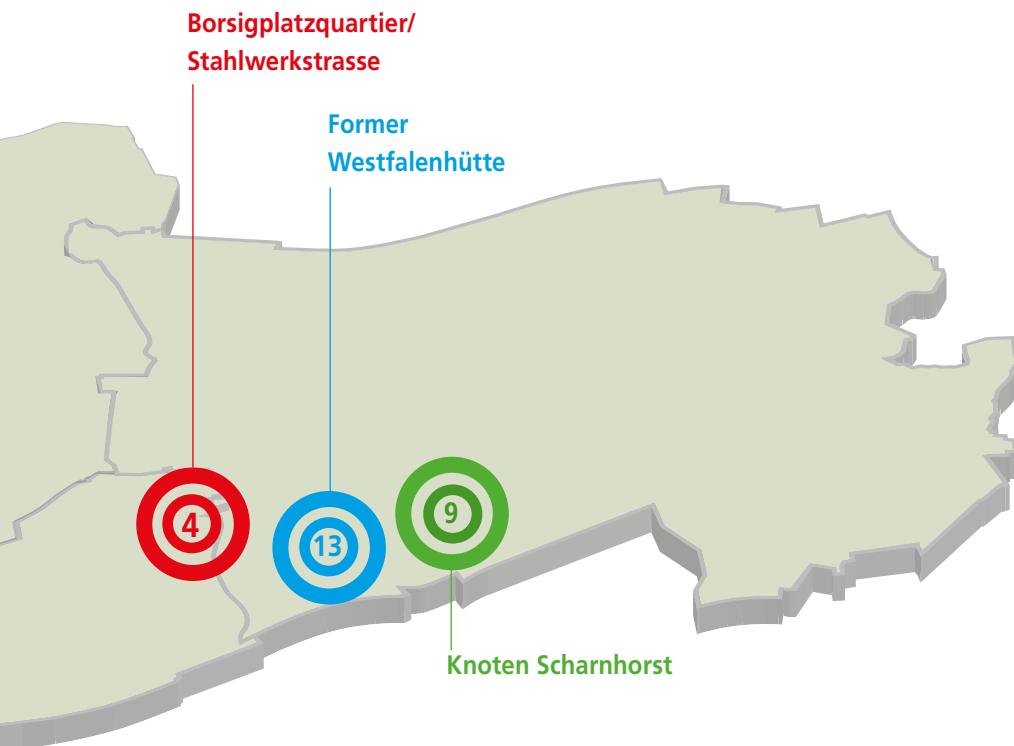


» **BY MERGING THE EXISTING WAREHOUSE LOCATIONS, REWE WAS ABLE TO CREATE A "MEGA REFRIGERATOR": OUR FRESHNESS CENTRE. IT'S A MILESTONE IN THE HISTORY OF OUR WAREHOUSE LOGISTICS AND STRENGTHENS THE REGION AS A BUSINESS LOCATION.**

ANDREAS SCHMIDT, CHAIRMAN OF REWE DORTMUND

DEVELOPMENT ZONES IN THE NORTH OF DORTMUND





1 Speicherstrasse Port Quarter

13.5 hectares or approx.
19 football pitches

2 SMART RHINO/former HSP site

52 hectares or approx. 73 football pitches
smart-rhino.de

3 Main station northern exit

14.4 hectares or approx.
20 football pitches

4 Borsigplatzquartier/ Stahlwerkstrasse

7 hectares or approx. 10 football pitches

5 EnergiePlusQuarter Brechtener Heide

New-build housing development – 13 detached homes, 2 apartment blocks

6 Dorstfeld Pulsschlag community centre

pulsschlag-dorstfeld.com

7 “Emscher nordwärts” future garden (tickets-only area)

40 hectares or 56 football pitches
iga.dortmund.de

8 Stormwater retention basin Mengede/Castrop-Rauxel

Hof Emscher Auen (in Castrop-Rauxel municipality)

9 Knoten Scharnhorst

Renaturalisation of approx.
12 km of watercourses
eglv.de

10 Allianz Smart City Dortmund

smartcity-dortmund.de

11 Energiecampus

4 hectares or approx.
5 ½ football pitches

12 Former Knepper power plant site

65 hectares or approx. 91 football pitches

13 Former Westfalenhütte steelworks site incl. parts of “Nordspange” *

300 hectares or approx.
420 football pitches

* For Nordspange see



» WE'RE BACKING THE "nordwärts" PROCESS BECAUSE IT LENDS A VOICE TO THE PEOPLE LIVING IN THE CITY'S NORTHERN DISTRICTS. CREATING A PERMANENT PLATFORM FOR THE INVOLVEMENT AND PARTICIPATION OF A WIDE RANGE OF STAKEHOLDERS POINTS THE WAY FORWARD - NOT JUST FOR THE RUHR REGION AND NORTH RHINE-WESTPHALIA.



PROF. DR. STEFAN SIEDENTOP, SCIENTIFIC DIRECTOR AT THE ILS RESEARCH INSTITUTE FOR REGIONAL AND URBAN DEVELOPMENT



» "nordwärts" - INNOVATIVE, PARTICIPATIVE, EMPOWERING. A PROJECT THAT EVEN AFTER FIVE YEARS IS STILL GROUNDBREAKING FOR URBAN DEVELOPMENT PROCESSES. IN COMBINATION WITH THE NETWORK THAT HAS EVOLVED AROUND IT, THE SCHEME ALSO SERVES TO ENABLE A MULTITUDE OF SUBSEQUENT PROJECTS AND IDEAS.

PROF. DR. SABINE SACHWEH, PROFESSOR FOR APPLIED SOFTWARE TECHNOLOGY AT DORTMUND UNIVERSITY OF APPLIED SCIENCES AND ARTS AND MEMBER OF THE FEDERAL GOVERNMENT'S DATA ETHICS COMMISSION

VOICES FROM THE SCIENTIFIC COMMUNITY

» FOCUSING ON THE NORTH OF DORTMUND DEMONSTRATES THE POWER OF SOCIAL INNOVATION IN ORGANIZING OUR LIFE AS A COMMUNITY. IT'S CENTRED AROUND A RANGE OF IDEAS AND PROJECTS THAT ALL IMPROVE QUALITY OF LIFE AND EMPOWER PEOPLE TO ACTIVELY SHAPE THEIR FUTURE. THIS IS HOW "nordwärts" IS BUILDING BRIDGES BETWEEN THE PRESENT AND THE FUTURE.



PROF. DR. JÜRGEN HOWALDT, DIRECTOR OF THE SOCIAL RESEARCH INSTITUTE AT TU DORTMUND UNIVERSITY



» AS AUTHORS OF THE "MEMORANDUM ON THE FUTURE OF INTERNATIONAL BUILDING EXHIBITIONS", A PROFILE OF REQUIREMENTS FOR PLANNING, CITY AND REGIONAL POLICY – AND THE FIRST INTERNATIONAL INSTRUMENT OF ITS KIND – THE IBA'S EXPERT PANEL AT THE FEDERAL MINISTRY OF THE INTERIOR, BUILDING & COMMUNITY COMMENDED THE DORTMUND "nordwärts" VENTURE BOTH FOR ITS CONCEPT AND ITS IMPLEMENTATION IN KEEPING WITH THE FORMAT OF THE IBA

KARL JASPER, MEMBER OF THE IBA EXPERT PANEL AND FORMERLY A REPRESENTATIVE OF NORTH RHINE-WESTPHALIA'S MINISTRY FOR REGIONAL IDENTITY, COMMUNITIES AND LOCAL GOVERNMENT, BUILDING AND GENDER EQUALITY



» "nordwärts" IS ONE OF THE MOST EXCITING INTEGRATED URBAN DEVELOPMENT PROJECTS IN EUROPE. AS AN INNOVATIVE INVESTMENT IN THE CITY'S FUTURE, THIS CONCERTED FUNCTIONAL AND URBAN ENHANCEMENT OF DORTMUND'S NORTHERN SUBURBS MARKS A DEFINING MOMENT IN THE STRUCTURAL TRANSFORMATION OF THE RUHR REGION.

UNIV.-PROF. DR. HABIL. THORSTEN WIECHMANN, HEAD OF THE DEPARTMENT OF SPATIAL PLANNING AND PLANNING THEORY AT TU DORTMUND UNIVERSITY

DID YOU KNOW?

In 2017 "nordwärts" was crowned with the European Sector Award. This prestigious international accolade from the European Institute of Public Administration (EIPA) honours the best and most innovative performers in public administrations across the continent. "nordwärts" beat off stiff competition in the "supra-local level" category from three other finalists from southern England, the Netherlands and Austria.



WHERE AND HOW "nordwärts" IS MAKING AN IMPACT

POSITIVE IMPACTS ON ALL AREAS

In 2015, "nordwärts" set itself the aim of developing the potentials of this space to the full, creating and retaining jobs, improving the environment and quality of life and strengthening training and education opportunities here. Now at the halfway stage after five years, many positive impacts are clearly visible in all of the above areas thanks to the strong cooperation between the whole of the city's administration and politics and the close involvement of Dortmund's urban community.



BIG INVESTMENTS AND NEW JOBS IN THE NORTHERN HALF OF DORTMUND

The investments and investors' interests in property here have increased steadily. Around 750 million euros of private investment has already flowed this way and 6,500 new jobs have been created. The economic potential of this as yet undeveloped area raises hopes for the creation of a further 10,000 jobs. One of the important drivers for this is the Smart City Dortmund alliance which is dedicated to generating investments and raising funding. Cooperation with the scientific community is also very successful. The "nordwärts" coordination office has already raised grants and funding amounting to 10.3 million euros in cooperation with scientific facilities and institutes.

QUALITY OF LIFE AND THE ENVIRONMENT ARE IMPROVING

Tourist interest in Dortmund's northern half has also increased due to the "nordwärts" Discovery Trail brochure. A large number of projects such as the climate islands and pocket-parks, community development of empty spaces etc. are being implemented to increase the quality of life and the environment.



LATEST STATUS OF THE "nordwärts" SUBPROJECTS

Currently there are 245 "nordwärts" subprojects. 52 of them have already been implemented, 95 are up and running and 50 are being prepared, developed further or assessed. 48 projects have not started yet.

1.2 million euros have so far been paid out of the municipal budget as start-up or co-financing for "nordwärts" sub-projects.

The latest status of the subprojects is presented transparently on the "nordwärts" online map.





NOTICEABLE INFRASTRUCTURE DEVELOPMENTS IN EDUCATION

The number of places in "all-day" schools in the "nordwärts" zone has increased from 4,000 to 5,500. Around 1.5 million euros of external funding has been raised for education-related projects for the northern half of Dortmund. The city has a strong focus on ensuring equal education opportunities for all children and young people here. From 2020, 184 million euros will be invested in school facilities within the project zone.

MORE FACILITIES FOR CHILDREN

Multiple new children's day care centres, new replacement buildings and additional groups with around 750 places for the under 3s and approx. 1,500 places for the over 3s have already been set up here. A further 530 places for under 3s have also been added in private day care centres and creches. More are planned.

HOUSING INDUSTRY IS HEAVILY COMMITTED

In the northern half of Dortmund, the housing industry has invested approx. 297 million euros in more than 10,000 flats. A further 812 new rental flats have been built with support from public funding. As rents continue to rise, this pays an important contribution to creating affordable, accessible housing. Companies are not only investing in building homes but are also investing more in the local environments and in supporting neighbourhood activities. It is clear that the housing industry acknowledges its responsibility in the "nordwärts" zone and sees great potential for the future. This strengthens and stabilises the residential areas making life in the "nordwärts" area more attractive. Better living conditions lead to higher quality of life.

"nordwärts" GETS CITIZENS INVOLVED

Around 28,000 citizens had got actively involved by the end of 2019. Thousands of people also took the opportunity to find out about and discuss the projects at about 280 different events that were put on.

In the 2019 "nordwärts" project cycle most projects were submitted by members of the city's community (80 %) showing that citizens are very much aware of "nordwärts".

There has been a lot of interest in the project at national and international congresses, which has also increased the city's profile, especially as a City of Science.

Children and young people have also got actively involved, e.g. in the Discovery Days at the Hansa Coking Plant or the Discovery Night at the Hansemann Colliery. Multiple new societies have been founded and citizens' community centres have been set up.

Linking up citizens' meetings and groups from different city districts within the "nordwärts" project zone has also led to discussions and exchange across the whole area. Knowledge and experience is being shared, helping to optimise local development processes on the ground.

All these activities can also be expressed in numbers: the involvement of dedicated volunteering in the "nordwärts" project zone increased by approx. 28 % between 2016 and 2018 alone.



DORTMUND'S CIVIL SOCIETY AND CITY AUTHORITIES WORKING TOGETHER

The high level of local volunteer commitment is also demonstrated clearly in the more than 90 strong board of trustees. A new network has emerged which, by working together, provides reliable support for the whole process and has initiated a variety of initiatives and projects of its own.



PUBLISHING DETAILS

City of Dortmund, "nordwärts" Coordination Office

Editorial office: Michaela Bonan (responsible), Melissa Raidt, Stefanie Vauken, Anja Vukovic

Text contributions: Dortmunder Hafen AG (p. 4), Thelen Gruppe (p. 7), Raimund Stüssel (p. 8), STAHM ARCHITEKTEN (p. 10–11) Gerald Kampert (p. 12), Dorstfelder Bürgerhaus Genossenschaft eG (p. 13), City of Dortmund Office of Urban Regeneration (p. 14), Emschergenossenschaft und Lippeverband – EGLV (p. 16–17), Dr. Fritz Rettberg (p. 18), Economic Development Agency Dortmund (p. 19), Anja Vukovic (p. 20), Economic Development Agency Dortmund (p. 21), Mario Böhm (p. 26–29)

Photo credits title page (from top): STAHM ARCHITEKTEN, raumwerk Gesellschaft für Architektur und Stadtplanung mbH, COBE Architects Copenhagen, bbz landschaftsarchitekten berlin gmbh

Photo credits:

p.3: City of Dortmund/Roland Gorecki, Ubbo de Boer

p.4–5.: COBE Architects Copenhagen, Dortmunder Hafen AG/Frai, Appelhans

p.6–7: Thelen Gruppe, City of Dortmund

p.8–9: raumwerk Gesellschaft für Architektur und Stadtplanung mbH

p.10–11: STAHM ARCHITEKTEN, Picture People (Neuss/Frankfurt), Nils Hendrik Müller /Braunschweig

p.12: Martina Hengesbach

p.13: HWR Architects Ramsfjell

p.14–15: Patrick Temme, bbz landschaftsarchitekten berlin gmbh

p.16–17: Emschergenossenschaft und Lippeverband (EGLV), Klaus Baumers, Jörg Saborowski/EGLV

p.18–19: City of Dortmund/Stefanie Vauken, Westfaltenhallen Unternehmensgruppe GmbH, TU Dortmund, City of Dortmund Land Survey and Registry Office

p.20–21: City of Dortmund/Anja Vukovic, SICKNIFIKANT Architektur & Mediengrafik, Tilmann Sick, REWE Dortmund SE & Co.KG

p.24–25: ILS/Roland Fechter, Markus Mielek, Fotostudios Barth, Regionale 2016-Agentur, TU Dortmund/Uwe Grützner

p.26–29: Lucas Kaufmann, Marcel Salmen, stock.adobe.com: Oscarhdez, Oksana Kuzmina, romul014

Maps: p.22–23: City of Dortmund Land Survey and Registry Office and Dortmund-Agentur,
Calculation of hectares into football pitches: der-umrechner.de/flaechen/fussballfeld-in-ha-hektar

Design, layout and printing: Dortmund-Agentur – 09/2020

For the sake of the environment: we only use FSC/PEFC-certified paper from responsible sources, alcohol-free printing chemicals and vegetable-oil-based printing ink

An aerial photograph of a lush green field, likely a park or agricultural area. A light-colored path or road runs diagonally across the frame, lined with young trees. A blue car is parked on the path in the upper right. The text is overlaid on the top left of the image.

63 %
DORTMUND
On the move again.
The Great Hike.

+++ SAVE THE DATE +++
EASTER MONDAY 2021

ONE CITY.
LOTS OF ECOLOGY.



#DoÜberrascht

DORTMUND-UEBERRASCHT-DICH.DE

Keep in touch with "nordwärts"
on the internet and in social media at:

🌐 dortmund-nordwaerts.de

📘 facebook.com/NordwaertsDortmund

📷 instagram.com/projekt_nordwaerts_dortmund

✉ nordwaerts@dortmund.de

